

Estateview Stucco CBU Mailbox Center

Our decorative stucco column transforms a Cluster Box Unit (CBU) into an elegant mail center. This attractive, prefabricated column comes ready-to-install over a standard USPS approved CBU mailbox and pedestal. Each column is 42" wide x 30" deep x 72" high.

The column has an easy-to-handle styrofoam core with a ready-to-paint, exterior-grade stucco surface. As an option, we offer three paint choices: Sandstone, Burnt Tuscan, or Slate Gray (custom colors available). Two coating options are available.

Standard Single Coat: This is the finish included in the base price. It can be painted with any exterior-grade paint.

Extra Durable Double Coat: The second layer of cement is thicker and stronger than the standard single coat and is better suited for high-traffic locations where there is a greater chance of surface impacts.

Our foam core columns are durable, yet safer than traditional cinder block or steel stud columns. The foam core is designed to crumple and absorb impact energy during a collision.

Our columns can be ordered with a CBU mailbox and pedestal, or you can supply your own. The column will fit most "F" spec CBU mailbox units that are mounted on a level pad. CBU mailbox color choices are: black, bronze, sandstone, white, green or gray (gray requires USPS approval). Local USPS approval is recommended.



8 Patron Box, Type I
(CBU-8-EVMC-TALL)

Stucco Color Options



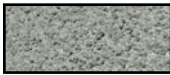
Sandstone



Burnt Tuscan



Slate Gray



Unpainted

Bayview Solar Lamp

Add elegance and security with our solar light - super-bright LEDs, glass panes, no wiring necessary.



12 Patron Box, Type II
(CBU-12-EVMC-TALL)



13 Patron Box, Type IV
(CBU-13-EVMC-SHRT)



16 Patron Box, Type III
(CBU-16-EVMC-SHRT)

CBU Color Options

USPS approved CBU mailboxes available in six color options.



White



Gray



Forest Green



Sandstone Black Dark Bronze

QualArc
11300 Trade Center Dr., Ste. A
Rancho Cordova, CA 95742



QUALARC®

Toll Free: 888-800-0153
Phone: 916-273-1576
Fax: 916-635-0228
Web: www.qualarc.com