

The Edgewood™ Lighted Address

Made of cast aluminum, the Edgewood™ is an elegant way to display a home address. These low-voltage fixtures come in 5 styles and 5 finish options. 4" black vinyl numbers are included. Raised cast aluminum numbers that match the frame finish are available as an optional upgrade. Visible at over 100 feet away, the Edgewood™ provides fast and accurate address identification for guests, deliveries, and emergency vehicles. Patents #US D444,503 and #US D461,847.



The Misty Oak (MIST-1309)
13-3/4" x 9-1/2" x 2-3/4"
(holds up to five 4" numbers)



Vertical (LTV-1303)
7-3/4" x 17-1/2" x 2-1/2"
(holds up to three 4" cast numbers or up to five vinyl numbers)



Oval (LTO-1302)
14-1/2" x 10-1/2" x 2"
(holds up to five 4" numbers)

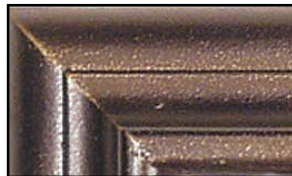


Standard (LTS-1300)
13-1/2" x 7-1/2" x 2-1/2"
(holds up to five 3" numbers)



Large (LTL-1301)
13-3/4" x 8-7/8" x 2-1/2"
(holds up to five 4" numbers)

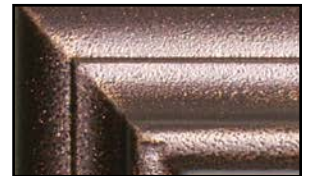
Edgewood™ Frame Finishes



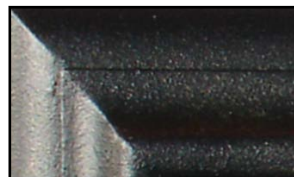
French Bronze



Oil Rub Bronze



Antique Copper



Black



Pewter

Raised numbers that match frame finishes are available.

Edgewood™ Transformers

The Edgewood™ can be attached to your existing low-voltage doorbell transformer. If required, two transformer models are available: plug-in or j-box.



FPS-2018 Plug-in



JBX-15951 J-Box

Store Display

A store display is available to help you sell our plaques. Please call for details.



QUALARC®
1-888-800-0153
www.qualarc.com