

Fountains/Scuppers



Roman Scupper Bowl, Sandstone
(size shown is 24", also available in 30" and 36")

NEW!

Kutstone™ Composite Site & Patio Amenities

- Made with real crushed stone, blended with resin and reinforced with fiberglass for extra strength.
- Looks and feels like real stone, color throughout material.
- More economical than real stone pieces, comparable in price to concrete.
- Lightweight: easier handling, less installation labor, cheaper shipping.
- Fill with soil, sand, rock or concrete to add weight and provide a solid foundation.
- Sealed with UV resistant matte sealant.



Stone texture



Lightweight

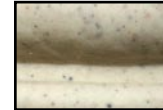
Kutstone™ Finishes:



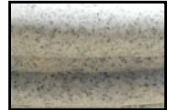
Tan



Sandstone



Autumn Leaf

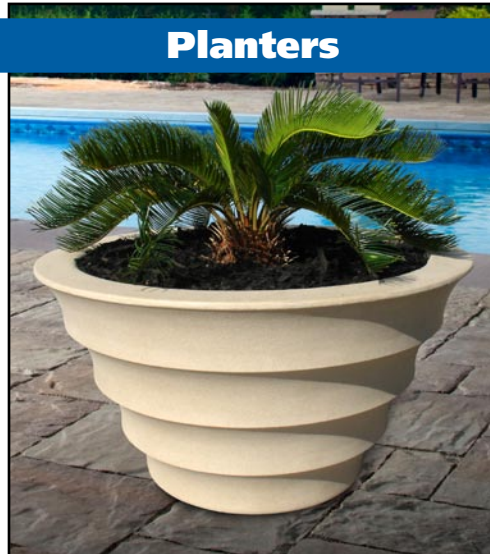


Speckled Granite

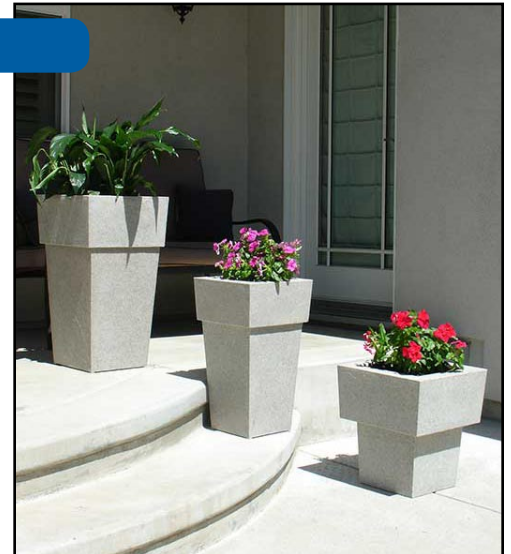
Planters



44" Roman Urn Planter, Sandstone



Melbourne Planter, Sandstone



Saratoga Planters (set of 3), Speckled Granite

Trash Receptacles



Trash Ring for 34" Urn
(urn holds 30 gallon garbage can)



22" Trash Can with Lid, Sandstone

Planter Saucers

Sizes: 15", 19", 23", 26", 36"



QUALARC®
www.qualarc.com
1-888-800-0153